

Adobe® LiveCycle® Process Management ES4

Streamline business processes across your firewall



Product summary

Adobe LiveCycle Enterprise Suite 4 (ES4) is an enterprise document and forms platform that helps you capture and process information, deliver personalized communications, and secure and track sensitive information. LiveCycle ES4 extends business processes to your mobile workforce and clients.

With Adobe LiveCycle Process Management ES4, you can:

- Accelerate delivery of new processes through drag-and-drop process modeling and user interface development
- Engage process participants inside and outside the firewall with dynamic PDF or HTML5 forms in online and offline modes
- Efficiently manage tasks through a customizable workspace with search, sort, escalate, delegate, and remind capabilities
- Decrease the cost and time of implementation by deploying user interfaces in Adobe Reader®

Rapidly build user-centric process applications with real-time process monitoring controls. Manage daily work efficiently, and improve business processes across the firewall.

Extend business processes to online and offline workers

The Adobe LiveCycle Process Management ES4 module includes a Mobile Workspace app that allows field workers to work on tasks anywhere, improving productivity and reducing the potential for errors. Sophisticated features, like geolocation tagging, timestamping, electronic signature capture, and the ability to attach notes, photos, and video, aid in providing accurate data that can integrate into business processes and simplify decision-making. With the addition of the LiveCycle Forms Pro module, mobile workers can immediately fill out HTML5 or PDF forms, attach other information gathered, and submit when they reconnect to the network.

Accelerate process application delivery

Process Management supports unified design-time tooling, allowing business and IT team members to collaborate when building processes. Form authors can use a visual design environment and drag and drop form elements, while business analysts visually design the overall process flow. Developers then configure process assets to invoke the appropriate services.

Engage users everywhere

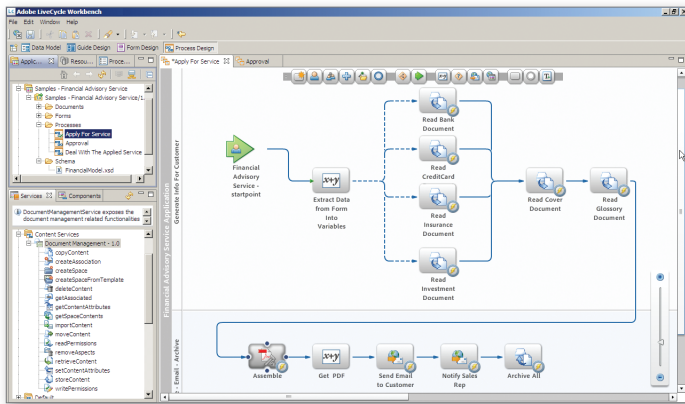
Participants can interact with processes online or offline using dynamic PDF or HTML5 forms on their desktop or mobile device. Users can also review, approve, or reject tasks through any email client as well as manage task lists on their mobile device through the Mobile Workspace app.

Integrate with core business systems

Using standards-based web services and enterprise content management (ECM) connectors, you can integrate your processes with back-end systems, including enterprise resource planning, customer relationship management, content management, and databases. This ability cuts the cost of automating cross-functional processes and preserves investments in existing systems.

Manage and optimize complex processes

You can brand and customize a rich HTML workspace, ensuring that users can efficiently manage all assigned tasks. Easy-to-use features in the workspace, such as search, sort, prioritization, escalation, and delegation, accelerate process interactions. Customizable dashboards and out-of-the-box HTML reports provide real-time insights into business operations, while an API allows you to extract and analyze process data in third-party reporting tools. Managers can make informed decisions, fix day-to-day problems, and make long-term process improvements.



Create processes using an intuitive design tool

Extend business processes to online and offline workers

System requirements

Adobe LiveCycle ES4 supports market-leading operating systems, web application servers, and databases. For platform support and system requirements, visit www.adobe.com/go/lc_systemreqs.

Related LiveCycle modules

- Forms Standard and Forms Pro
- Forms Portal
- Reader Extensions
- Rights Management
- Digital Signatures
- PDF Generator

Key features and benefits

Visual process and user interface design environment

- Easily define processes and abstract data models
- Simplify form authoring with reusable blocks

Mobile workspace application for tablets

- Support mobile field workers with online and offline access to forms-based processes
- Collect rich data, like geolocation tags, timestamps, photos, video, and electronic digital signatures, in the field, simplifying and speeding form processes

Centralized repository with versioning and design-time access control

- Support large collaborative development
- Revert to older versions of process components as needed
- Meet compliance requirements with asset change audits

Integration with existing infrastructure

- Reduce effort and time to automate cross-functional processes that interact with existing systems through web services and ECM connectors
- Leverage existing IT assets through out-of-the-box integration with LDAP, web services, databases, SMTP, POP3, IMAP, JMS, and FTP
- Integrate with third-party reporting tools through an API

Rich, customizable workspaces for task list management

- Gain productivity through a central interface for all process interactions through either an HTML workspace or an Adobe Flex® workspace
- Rapidly brand and customize the HTML workspace by selecting components and templates
- Use a Flex workspace to leverage existing investments in workspace customization

End-to-end process and business monitoring

- Gain visibility into the overall health of processes through out-of-the-box reports and an API that allows customized report generation

Cross-platform user interface deployment

- Cut cost and deployment time by building user interfaces once, with no special coding or browser and operating system testing
- Extend process reach by deploying in Adobe Reader, Adobe Reader Mobile, and HTML

For more information

www.adobe.com/livecycle



Adobe Systems Incorporated
345 Park Avenue
San Jose, CA 95110-2704
USA
www.adobe.com

Adobe, the Adobe logo, Flex, LiveCycle, and Reader are either registered trademarks or trademarks of Adobe Systems Incorporated in the United States and/or other countries. All other trademarks are the property of their respective owners.

© 2013 Adobe Systems Incorporated. All rights reserved. Printed in the USA.

91078876 1/13